

IMPACT REPORT



"Making Disciples...Transforming Lives!"

2023-24 Church Theme
FY 24 **FORWARD**
REDISCOVERING GOD ||| ACTS 2:41-47
FAITH ||| FELLOWSHIP ||| FINANCES



FY 24 IMPACT REPORT

A Message from the Pastor



Dear Central Family and Friends,

As we reflect over the past fiscal year, we are filled with gratitude for the incredible ways God has moved among us. Our theme, *“Forward: Rediscovering God,”* guided us as we sought to embody the spirit of the early church described in Acts 2:42-47. This passage reminds us of the power of attention to faith fellowship and finances.

Our community outreach efforts have been a testament to our commitment to serving others. We provided over \$24,000 in meals to our unhoused and food-insecure neighbors every Tuesday during Community Meal, embodying Christ’s love through action. In partnership with Saint Louis Public Schools and Saint Louis Public Charter Schools, we supported 195 families with Thanksgiving meals, investing \$9,707.96 in this vital initiative. Our Benevolence Ministry extended help to 58 families and 188 individuals, distributing \$11,751.63 to those in need.

We have also expanded our impact through various partnerships and initiatives. Central hosted a blood drive in collaboration with the American Red Cross to give critical units of blood to save lives. We partnered with the Siteman Cancer Center and the Breakfast Club STL to provide free mammograms to the community, potentially saving countless lives. Our partnership with VITA allowed us to assist 723 families in completing their taxes free of charge, providing a valuable service to our community. Additionally, we invested in the future of our youth by awarding \$10,705 in scholarships to deserving students.

This year saw the birth of new ministries and the revitalization of existing ones. We established a Grants Team which helped us secure an additional \$20,000 for our outreach efforts. Our Green Team and Community Garden initiative is nurturing both our environment and our relationships. The Kilalo Rites of Passage program expanded creating space for empowering our young women to grow in faith and leadership. Our church trip to Ghana was a transformative experience, broadening our global perspective and deepening our faith.




Your unwavering financial support has been the cornerstone of our ministry this past year. Through your generous giving, we’ve been able to touch lives, feed the hungry, and spread God’s love in tangible ways throughout our community and beyond. Every dollar sown into this ministry yields a harvest of changed lives and transformed communities.

“Giving Away My Joy!”

Sincerely,

Rev. Anthony L. Riley

Rev. Anthony L. Riley, M.Div., D.Min.

   – @anthonylriley

CENTRAL STAFF

CORE TEAM

OFFICE OF THE PASTOR



**Rev. Anthony L. Riley, M.Div., D. Min.
Pastor**
Pastor@cbcstl.org



**Executive Assistant to the Pastor
Ms. Kyla Williams**
executiveassistant@cbcstl.org
Responsibilities: Disciple Meetings
with the Pastor, Pastoral
Appointments



**Minister of Discipleship
Rev. Natasha Nedrick Adzudzor**
discipleship@cbcstl.org
314.710.0003
Responsibilities: Classes/Sunday
School, Ministries, New Members,
Student Ministries, Volunteers



**Director of Worship
Mrs. Jennifer L. Kelley**
worship@cbcstl.org
314.710.1220
Responsibilities: Choirs, Band,
Creative Arts, Experience Team,
Creativity

DISCIPLESHIP TEAM



**Minister of Youth
Rev. Tracey Watkins**
cbcyouthmin@cbcstl.org

ADMINISTRATIVE TEAM

Church Office: 314.533.0747



**Administrative Assistant
Ms. Leah Nolden**
lnolden@cbcstl.org
Responsibilities: Accounts Payable,
Contribution Statements, Contact Info
Update for Text Messages, Emails and
Voice Messaging



**Staff Accountant
Ms. Dawn Wallace**
dwallace@cbcstl.org
Responsibilities: Accounting and
Budgeting

**Receptionist
Vacant**
officeassistant@cbcstl.org
Responsibilities: Bereavement/
Funeral Support, Church Calendar,
Receptionist, Registration and Jotform
Management.

FACILITIES

Church Office 314.533.0747

**Facility Manager/Custodian
Vacant**
Responsibilities: Facilities and Ground
Maintenance, Event Management,
Warehouse Management



**Children's Ministry Coordinator
Ms. Marjorie Patton**
mpatton@cbcstl.org

Office Hours: Monday - Thursday 8:00am-5:00pm.

ADMINISTRATION

SCRIPTURE

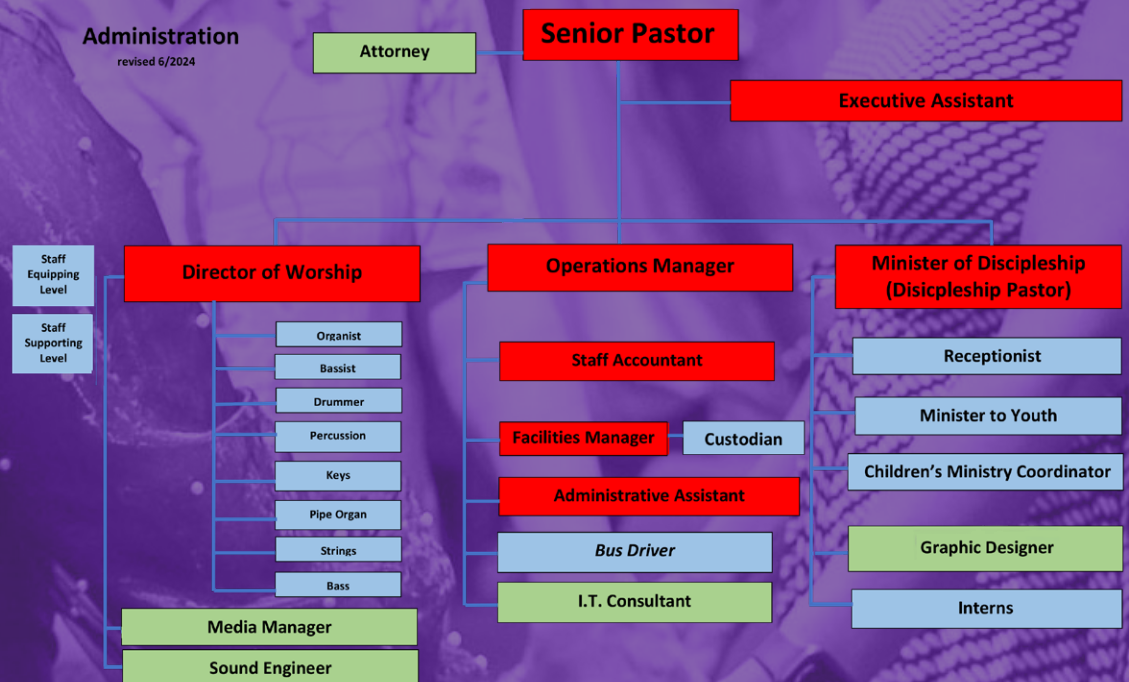
Acts 2:42-47

They devoted themselves to the apostles' teaching and fellowship, to the breaking of bread and the prayers.

Awe came upon everyone, because many wonders and signs were being done by the apostles. All who believed were together and had all things in common; they would sell their possessions and goods and distribute the proceeds to all, as any had need. Day by day, as they spent much time together in the temple, they broke bread at home and ate their food with glad and generous hearts, praising God and having the goodwill of all the people. And day by day the Lord added to their number those who were being saved.

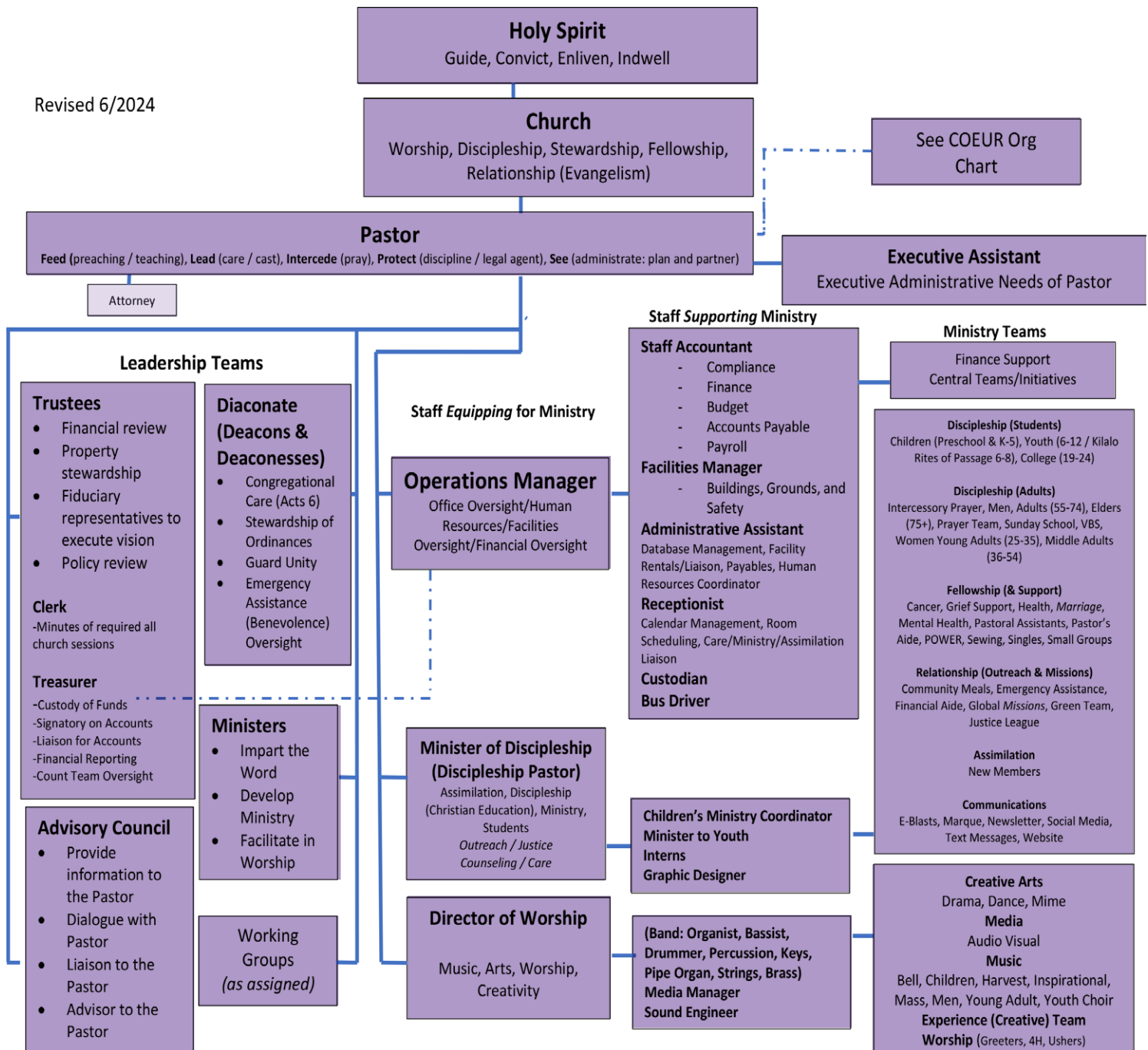
MOTTO:

Making Disciples...Transforming Lives!



CENTRAL ORGANIZATION CHART

Revised 6/2024



CENTRAL MINISTRY IMPACT



FALL-O-WEEN

Fall-O-Ween provided a safe and festive environment for families to celebrate the season.



COMMUNITY MEAL

Through a \$24,000 investment in Community Meal, we served over 3,000 nutritious meals to unhoused and food-insecure individuals supporting our most vulnerable neighbors.



SCHOLARSHIPS AWARDED

Our commitment to education empowerment resulted in the awarding of 11 scholarships totaling \$10,705 to deserving students.



BENEVOLENCE (EMERGENCY ASSISTANCE)

We extended a helping hand to 58 families, encompassing 188 individuals, by distributing \$11,751 in critical financial assistance.



GREEN TEAM

Cultivated environmental stewardship by distributing seedlings to youth and the congregation, leading nature hikes, and creating an eco-conscious community through education.



HEALTH and CANCER SUPPORT MINISTRY

Provided a lifeline to those affected by cancer, hosting monthly support group meetings and distributing personalized care packages.

CENTRAL MINISTRY IMPACT



JUSTICE LEAGUE

Hosted Voter Registration Drive in partnership with the Women League of Voters



KILALO RITES OF PASSAGE (MIDDLE SCHOOL)

Mentored over 25 youth this year significantly expanding our impact by launching a new girls' program, empowering young women to navigate their journey to adulthood with confidence and resilience.



COMFORT KEEPERS GRIEF SUPPORT GROUP

Grief Support ministry provided solace and healing through monthly meetings, and further extended its reach by hosting a special Mother's Day session offering a safe space for those navigating loss and fostering a supportive community.



SINGLE'S MINISTRY

Expanded its cultural impact by hosting an enlightening Black History program, showcasing the works of prominent Black authors and fostering a deeper understanding of African American literature and history.

CENTRAL PARTNERSHIPS



THANKSGIVING GIVE AWAY

Our Thanksgiving Food Giveaway initiative partnered with 52 St. Louis Public Schools and Saint Louis Public Charter Schools to provide \$9,708 worth of Thanksgiving meals, benefiting 195 families and nourishing 1,147 individuals across the community.



HEALTH AND CANCER SUPPORT MINISTRY

We partnered with the Siteman Cancer Center and Breakfast STL to provide 11 free mammograms, empowering our community with vital early detection services and potentially life-saving screenings for those in need.

Partnered with the American Red Cross to host a blood drive, where 31 generous individuals donated blood, contributing to the critical supply needed to save lives in our community.



SINGLE'S MINISTRY

Partnered with the YWCA and the St. Louis Area Violence Prevention Commissions to host a domestic violence symposium, educating and empowering participants on intimate partner domestic violence prevention and support.



GHANA IMPACT CARE

We donated educational toys to an orphanage, Impact Care, in Ghana, empowering children with tools for learning and play while fostering cognitive development and creativity.



METRO ST. LOUIS COMMUNITY TAX COALITION

Our partnership with Metro St. Louis Community Tax Coalition resulted in the preparation of 723 tax returns, generating \$592,209 in federal refunds, including \$177,307 in Earned Income Tax Credits and \$155,096 in Child Tax Credits, providing significant financial support to low and moderate-income families in our community.

A Trip to Ghana



Student Ministries



Black History Program



CHRISTMAS PRODUCTION



Youth Camping



CENTRAL DISCIPLESHIP



SEVEN LAST SAYINGS



ASH WEDNESDAY



FOOTWASHING



BAPTISM



DEDICATION OF BABIES

FY24 FINANCIAL SUMMARY

	Jul '23 - Jun 24
Ordinary Income/Expense	
Income	
41100 · TITHES	973,168.31
41200 · OFFERINGS	93,326.60
41400 · PROGRAM / EVENT REVENUE	32,730.50
41500 · MINISTRY REVENUE	20,392.90
41700 · MERCH SALES	0.00
41900 · RESTRICTED DONATIONS	
41910 · Scholarship Receipts	17,570.96
41920 · Mortgage Receipts	10,513.00
41930 · Benevolence Receipts	17,010.50
41940 · Funerals & Repasts	4,274.00
41950 · Fundraising Requests	54,600.07
Total 41900 · RESTRICTED DONATIONS	103,968.53
Total Income	1,223,586.84
Cost of Goods Sold	32,196.35
Gross Profit	1,191,390.49
Expense	
51000 · WAGES, SALARIES & BENEFITS	655,810.11
52000 · INDEPENDENT CONTRACTORS	166,698.58
53000 · ADMINISTRATIVE OVERHEAD	580,203.55
59000 · RESTRICTED EXPENDITURES	
59100 · SCHOLARSHIPS AWARDED	10,705.00
59200 · BENEVOLENCE ASSISTANCE	10,196.94
Total 59000 · RESTRICTED EXPENDITURES	20,901.94
Total Expense	1,423,606.06
Net Ordinary Income	(232,215.57)
Other Income/Expense	
Other Income	92,181.28
Other Expense	192,867.78
Net Other Income	(100,686.50)
Net Income	(332,902.07)
Depreciation Added back in	160,000.08
	(172,901.99)
Ghana Expenses Added back in	129,921.16
Net Income	(42,980.83)

Proposed Income Expectation

1 Tithe: 10% of total income.
If you do not tithe yet, \$56/week...
this includes restricted giving
(bi-monthly: \$112 or monthly: \$243)

2 Program / Event Revenue: ticket sales, sponsorships, fees from vendors

3 Ministry Revenue Budget:
Proposed \$5/month (or \$60/year) per person for Missions/ Outreach

4 Restricted Donations:

- Mortgage: Proposed \$10/month (or \$120/year for the mortgage) per person
- Scholarship: Proposed \$5/month (or \$60/year for scholarships) per person
- Benevolence: Proposed \$5/month (or \$60/year) per person for Benevolence (our emergency assistance fund for those disciples and community members in need)
- Annual Fund

5 COGS = Cost of Goods & Services

If you give electronically there is a fee deducted by the processing companies (i.e. Givelify, Vanco). Those fees are captured here and subtracted from your donation.

6 Wages, Salaries & Benefits

- Ministry Staff
- Office Staff
- Musicians

7 Independent Contractors Breakdown

- Guest Speakers and Presenters
- Guest Clinicians and Psalmist
- Media: Audio, Video, Graphic Design
- Legal & Accounting

8 Administrative Overhead Breakdown

- Leases & Service Contracts
- Computer Equipment & Supplies
- Training Seminars & Conferences
- Materials & Supplies
- Phone/Internet/Utilities
- Dues, Memberships, Subscriptions
- Scholarships Awarded
- Postage, Freight & Handling
- Insurance & Security
- Repair & Maintenance
- Advertising & Public Relations
- Travel Expenses
- Miscellaneous Expenses

9 Other Income Breakdown

- Atlas Public Schools Rent
- Facilities Rentals
- Grants

FACILITY AND GROUNDS

Facility and Ground Updates

**Added Lights
in Parking
Lot 2 &3
& Baptism
Heater repair
\$900**



**Inductor
Assembly
Replacement
for HVAC unit
\$1,300**

**Electrical
Repair in the
Basement
in the sanctuary
\$900**



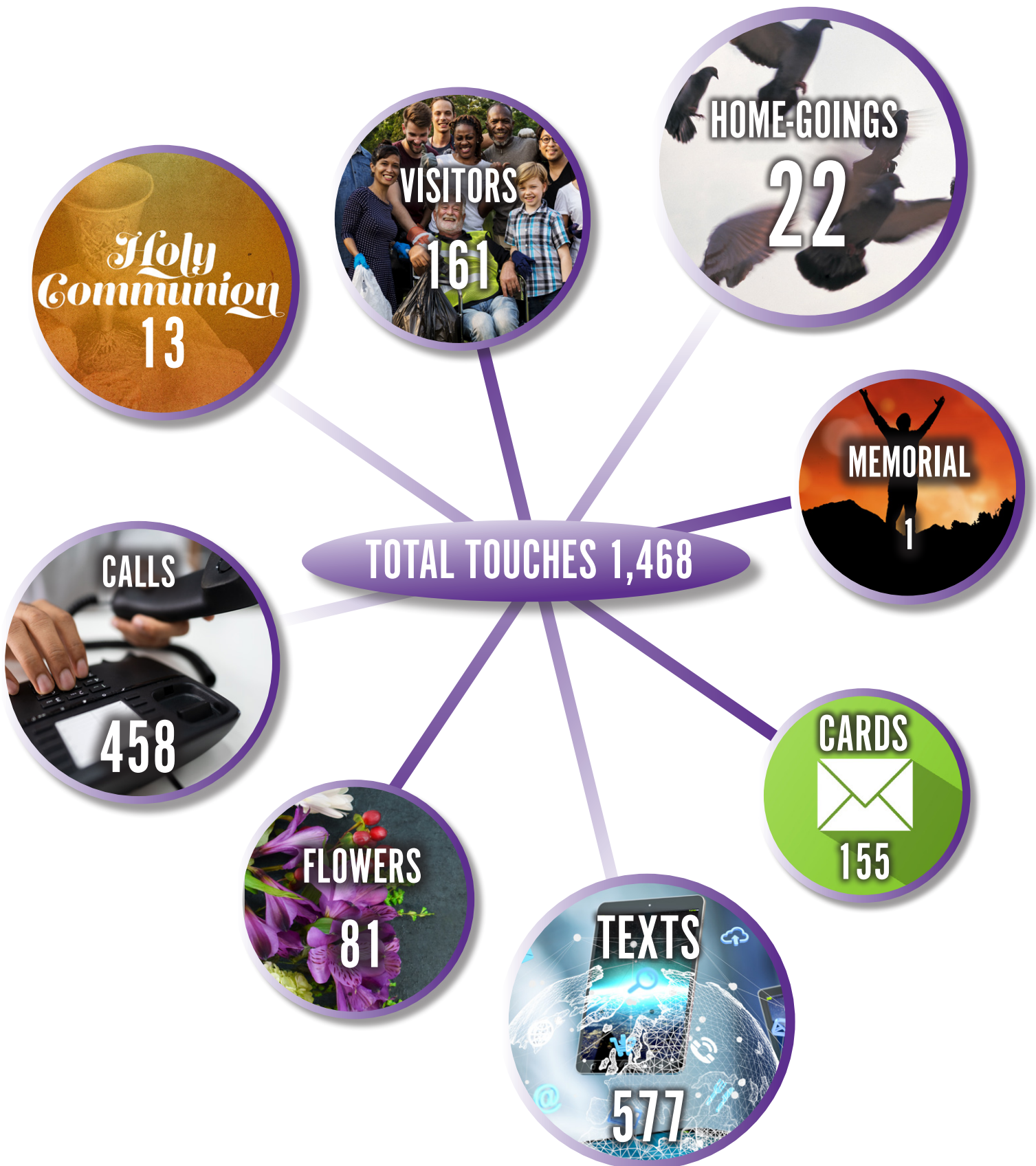
**Replaced
Track Lights
in vestibule
\$625**



**Replaced
Ceiling Lights
in the Gym**



DIACONATE MINISTRY CONGREGATIONAL CARE



CELEBRATIONS

The Adzudzor's Baby Shower



Christmas Concert



Church BBQ



Church Anniversary



Revival



Pastor's Anniversary



Harris Stowe
Choir Visit
Celebrating HBU's



Women's Tea





2842 Washington Blvd.
St. Louis, MO 63103
314.533.0747

  @CBCSTL |  @CBCSTLNEWS

Email: AskCentral@cbcstl.org

WWW.CBCSTL.ORG